



Shared Pages

CCI NewsAccess

In systems prior to version 3.7.0, working with shared pages was done by means of relevant print lists.

Shared Pages are used to share and distribute pages throughout a news enterprise. A page created for use in other products or newsrooms can be added to “Shared Pages”. Other users can then browse through these Shared Pages to find pages to be used in their product or newsroom.

From version 3.7.0, CCI NewsGate introduces functionality for working with shared pages from within CCI NewsAccess, Shopper and CCI PageDirector.

The release 3.7.0 shared pages functionality includes:

- Possibility to create and maintain taxonomy trees for shared pages on global and newsroom levels in the **Setup** workspace
- A new “Shared Pages” node in the **Pages** workspace **Navigation** pane, where the tree structure reflects the taxonomy tree structure defined in the **Setup** workspace
- A new **Shared Pages** task pane in **Pages** workspace used for filtering and saving favorites
- A list work bar to easily specify a date interval when listing shared pages
- Possibility to share pages by dragging-and-dropping pages from a pages list to a relevant “Shared Pages” taxonomy node
- Possibility to source shared pages by dragging-and-dropping pages from a page list to CCI PageDirector
- Possibility to source shared pages using Shopper
- Functionality to remove pages from a shared pages taxonomy

Display shared pages in the “Pages” workspace navigation area

From version 3.7.0, shared pages can be displayed in the **Pages** workspace by clicking a new “Shared Pages” node in the **Pages** workspace **Navigation** pane.

In most cases the user does not want to display shared pages in the **Pages** workspace **Navigation** pane. It is only in situations where the user specifically wants to work with shared pages that these should be visible in the **Navigation** pane.

In the **Preferences** window, the user can use the “Show shared pages folder in navigation panes” option to control whether shared pages are displayed. When enabled, the “Shared Pages” node is displayed with underlying newsroom(s) and taxonomies in the **Pages** workspace **Navigation** pane.

Note The shared pages are organized in taxonomy trees, which are created and maintained in the **Setup** workspace. For more information about setting up and maintaining the shared pages taxonomy tree, please refer to the “Creating and Maintaining Taxonomy Trees for Shared Pages” task in section 2.11.

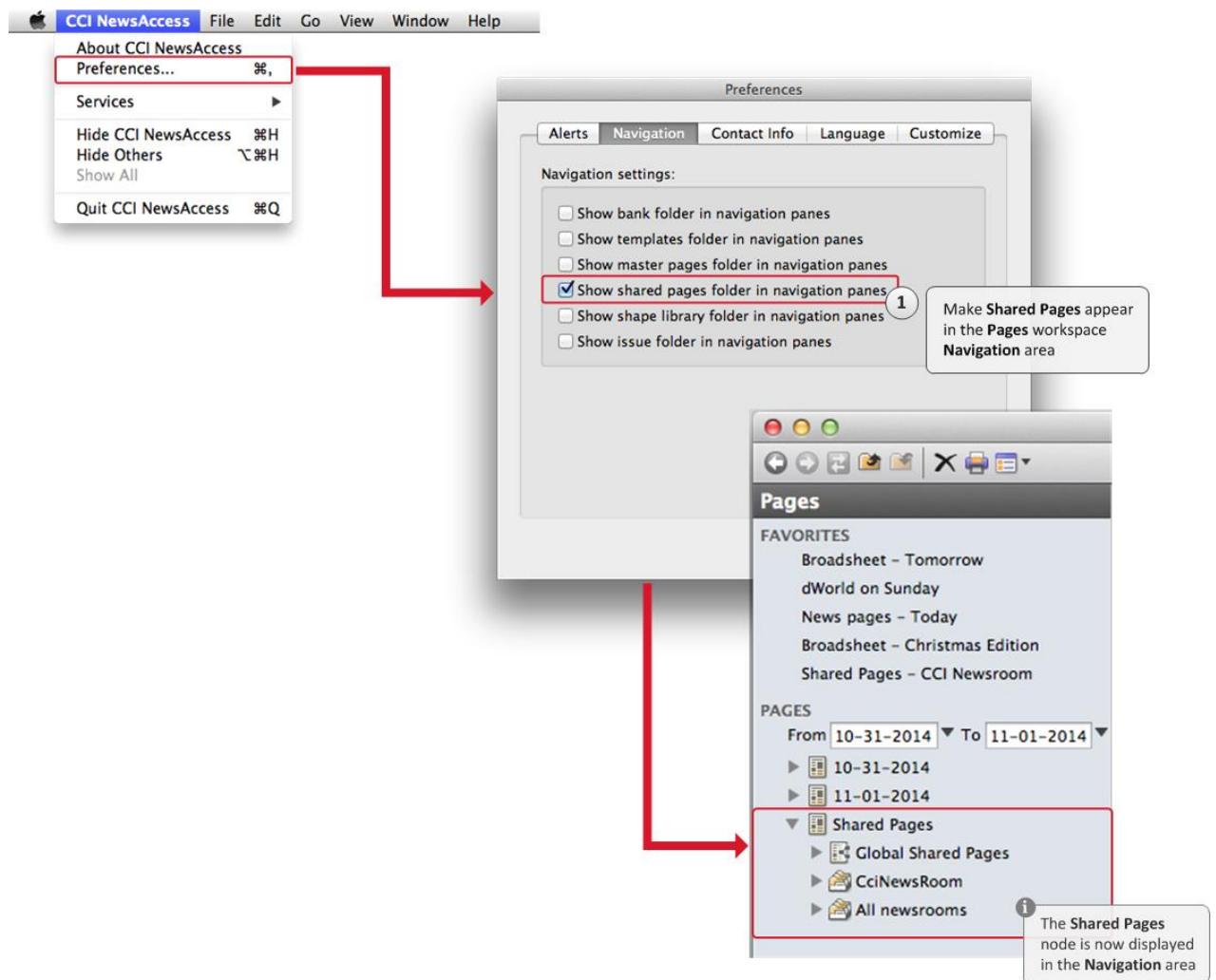


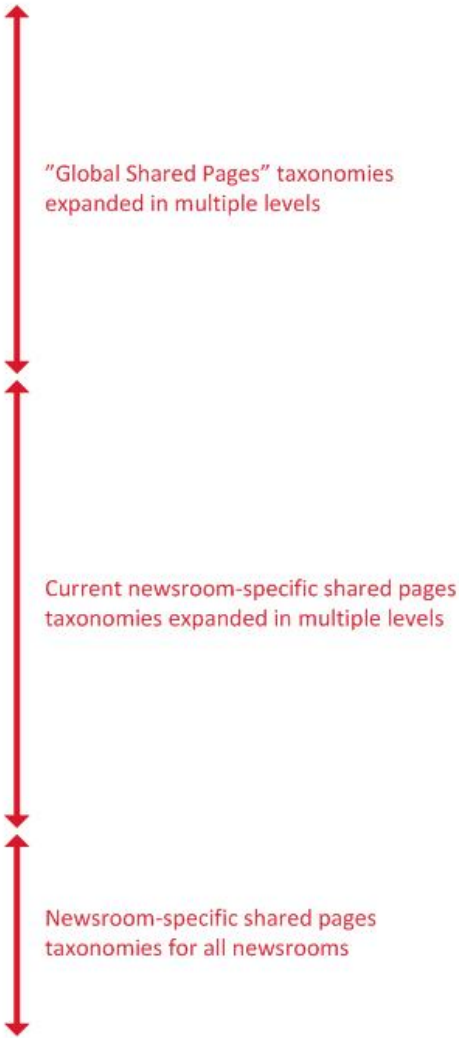
Figure 22. Displaying “Shared Pages” in the “Pages” workspace “Navigation” pane.

The “Shared Pages” node has the following main taxonomies:

- Global Shared Pages taxonomies
- Shared pages taxonomies specific for the current newsroom
- Shared pages taxonomies for all newsrooms

All taxonomies can be expanded in a tree structure that matches the shared pages taxonomy tree structure defined in the **Setup** workspace.

Note If the user is a member of only one newsroom, the [newsroom]/All newsrooms structure will not be shown.



When a shared pages taxonomy node is selected in the **Navigation** pane, all the shared pages associated with this taxonomy and all its sub-taxonomies are displayed in the list area.

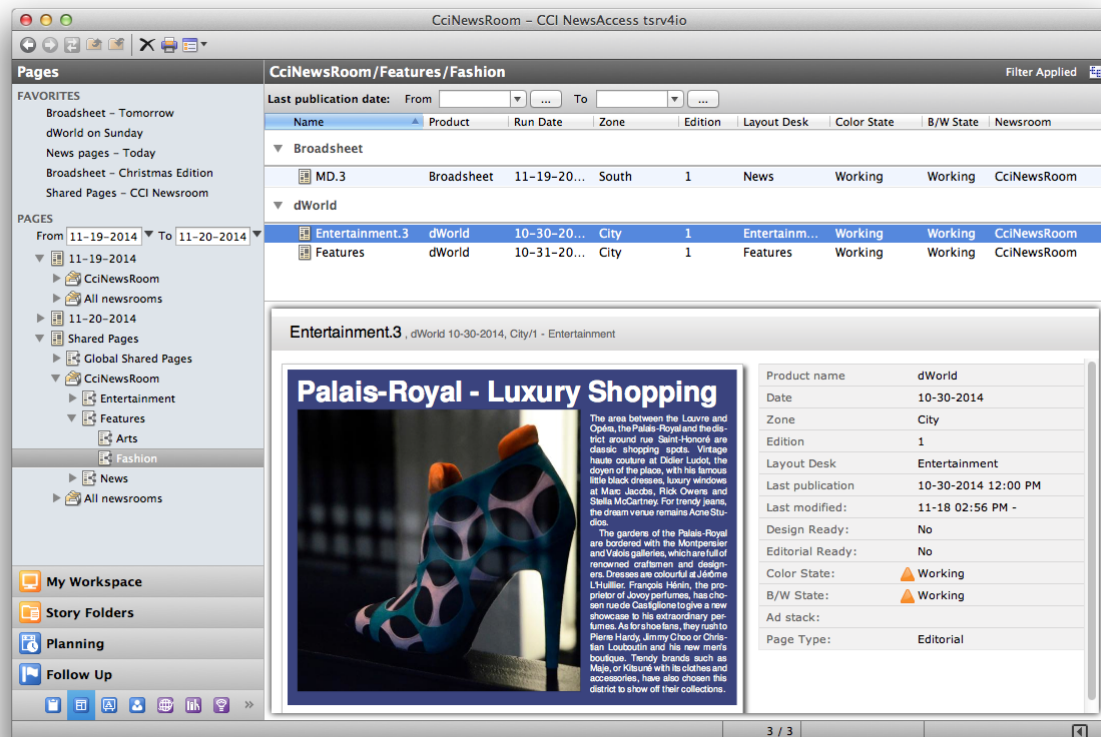


Figure 24. A list showing the items in the “Fashion” taxonomy category.

Note A taxonomy node can be dragged-and-dropped from the pages navigation area to the favorite area to save it as a favorite.

About the “Misc” node

The “Global Shared Pages” node contains a “Misc.” node, which cannot be renamed or deleted.

This node is primarily used for migration purposes, as it makes it possible to move all existing shared pages in systems prior to version 3.7.0 into the new shared pages taxonomy structure in a single action.

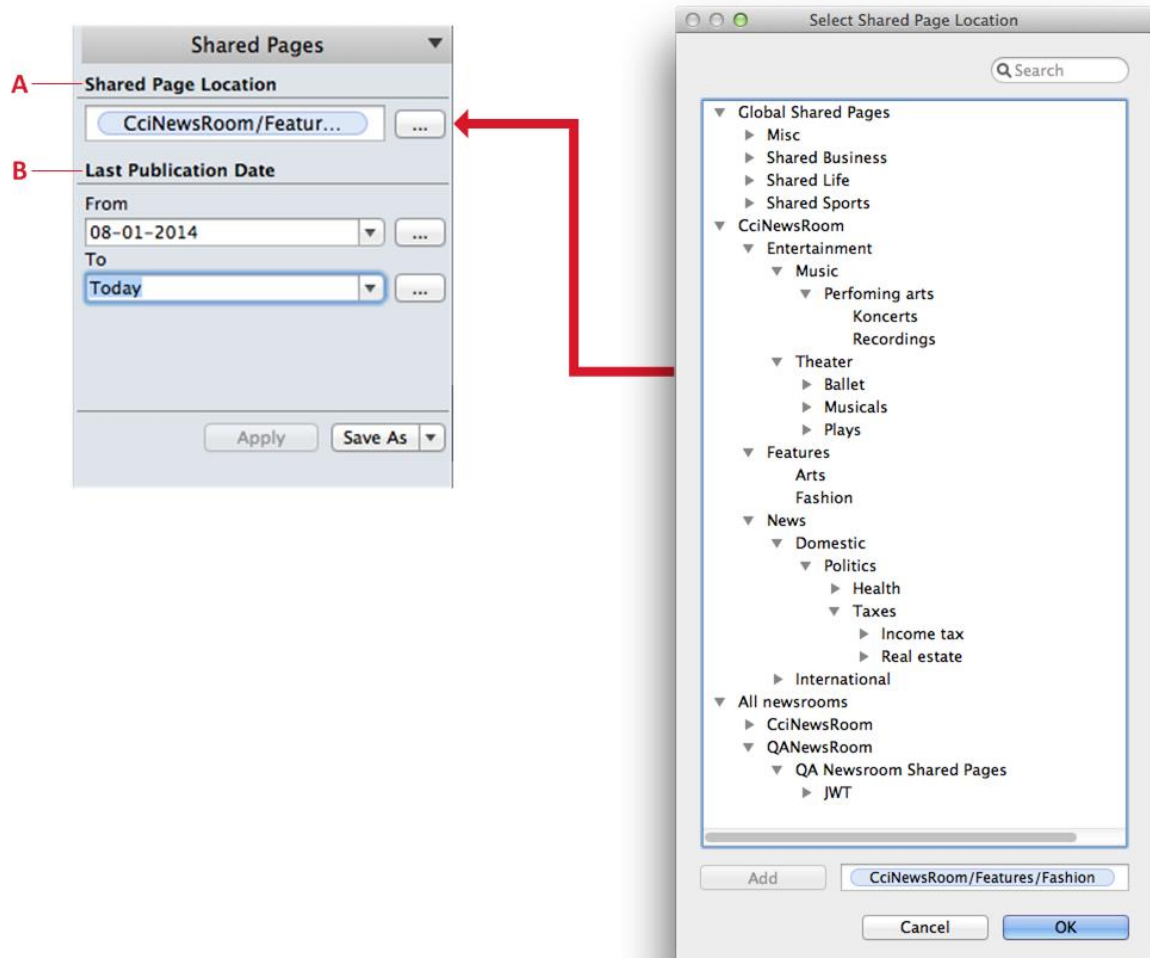
In daily use, the “Misc” node also offer offers a fast way of sharing pages, without having to browse down into the shared pages taxonomy structure. Pages dragged-and-dropped directly on the top of the “Shared Pages” node will be placed in the “Misc” taxonomy.

Note If the user clicks the top “Shared Pages” node, content from the “Misc” taxonomy is displayed in the list area.

“Shared Pages” task pane

A new **Shared Pages** task pane, used to specify desired subset(s) of shared pages taxonomies, has been added to the **Pages** workspace.

In addition to filtering on one or more shared pages taxonomies, the task pane also offers the possibility of specifying a date interval to request only pages with last publication date within that interval. The filtered list can then be saved as a favorite.



A Shared Page Location

- Select the location(s) of the shared pages

The field has auto-completion.

The “Select Shared Page Location” window, where multiple locations can be selected, is opened from here.

B Last Publication Date

- From
- To

By default, the period filters on shared pages with “Today” as last publication date.

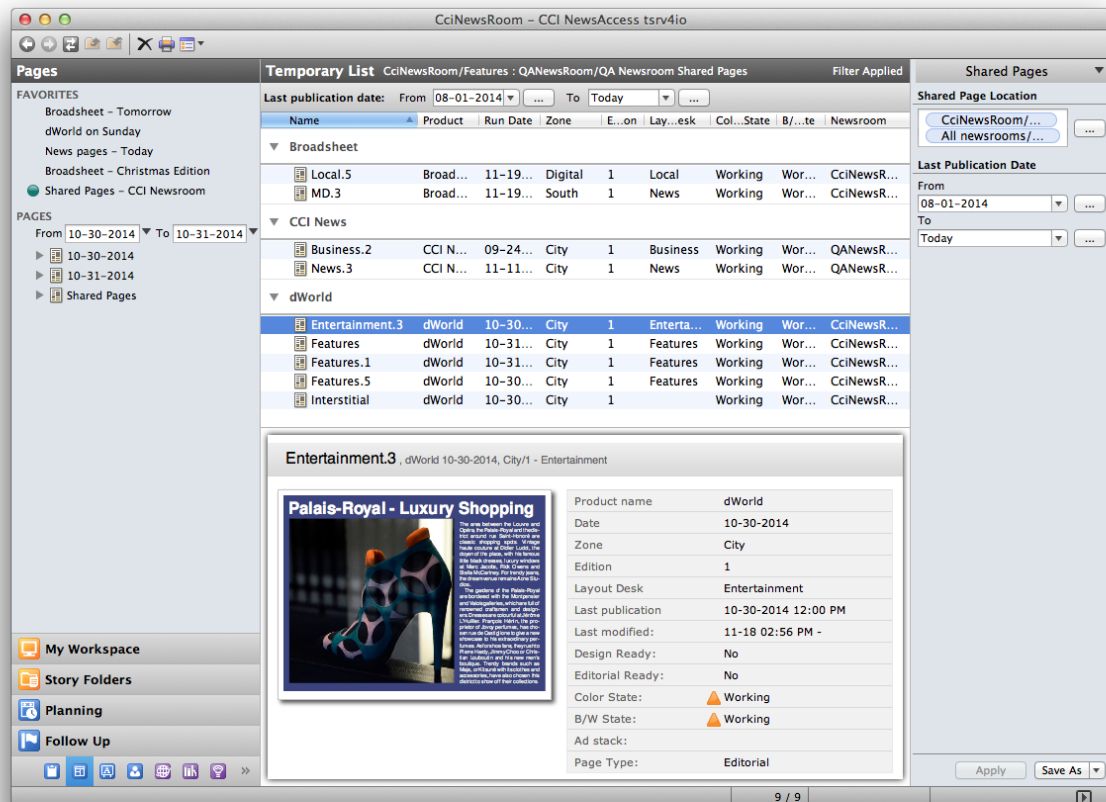


Figure 25. Example of a favorite list created with the “Shared Pages” task pane filter options.

List work bar filter options for specifying a date interval

The shared pages list includes a work bar with “From” and “To” filtering options. This work bar can be used to filter the list by a selected date interval without having to reapply new/changed filtering options in the **Shared Pages** task pane.

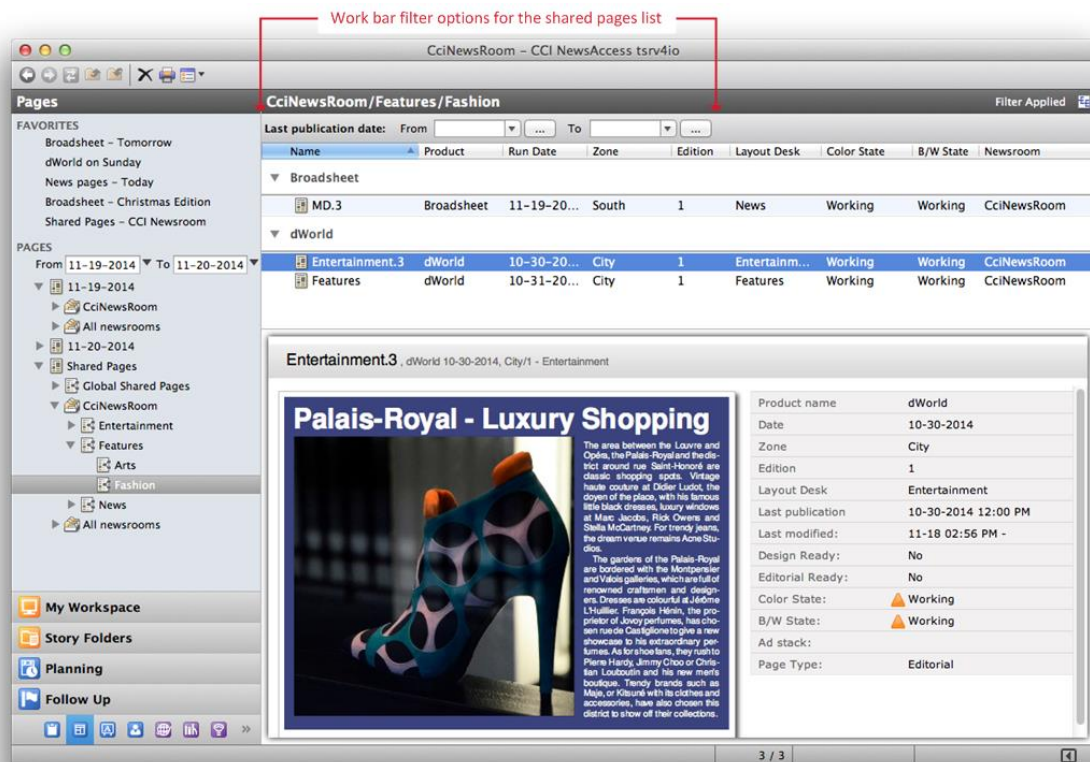


Figure 26. Work bar filter options for the shared pages list.

Note The work bar filter options are only shown for lists containing shared pages.

Access rights to sharing pages from other newsrooms

The shared pages functionality enables users to use pages from other newsrooms without being members of those other newsrooms.

If a user intends to source a shared page from another newsroom to his/hers own newsroom, only “Read” access to the other newsroom is required. It is not necessary for users to be members of all newsrooms from which they will use shared pages.

Adding pages to the “Shared Pages” taxonomies

A page to be shared is added to the desired shared pages taxonomy by dragging-and-dropping from an ordinary page list. The page will then appear in the shared pages list, from where it can be sourced.

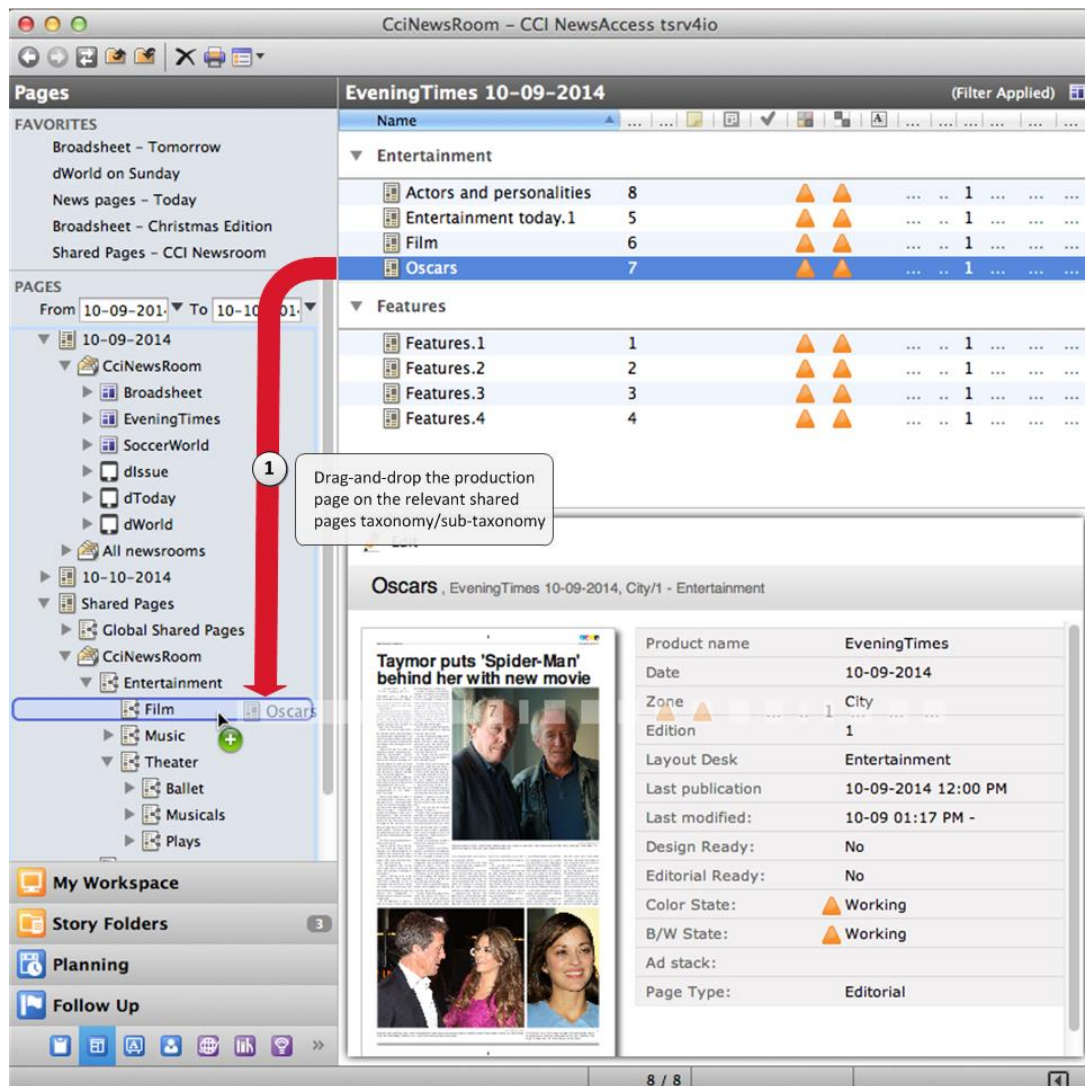


Figure 27. Adding a page to a shared pages sub-taxonomy.

Sharing pages by dragging-and-dropping on the “Shared Pages” node

A page can also be dragged-and-dropped directly on the “Shared Pages” node, which will place the shared page in the “Misc” taxonomy. This is a fast way to share pages without having to browse down in the “Shared Pages” taxonomy tree.

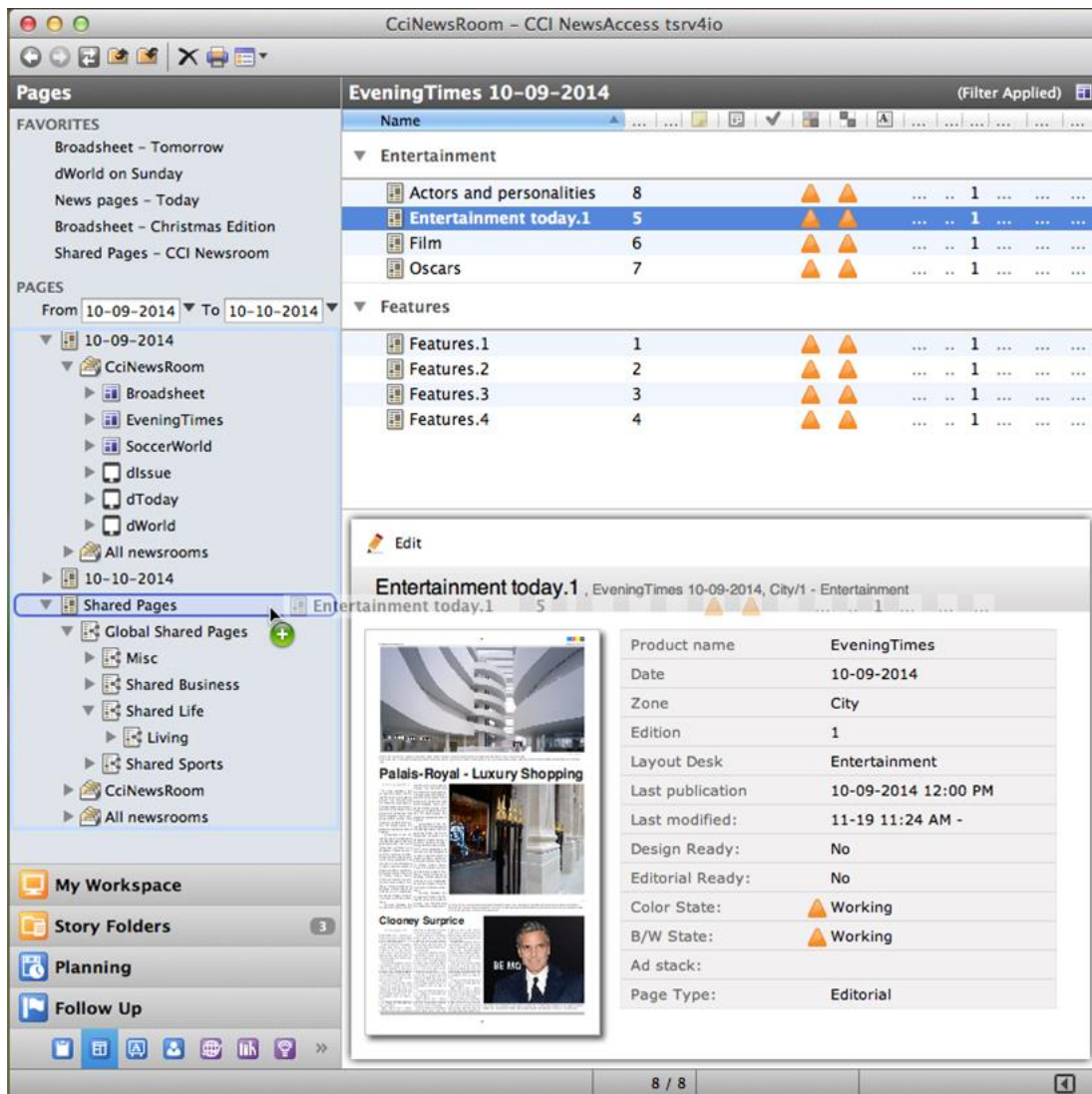


Figure 28. Sharing a page to the “Shared Pages” node.

The page is now automatically placed in the “Misc” taxonomy:

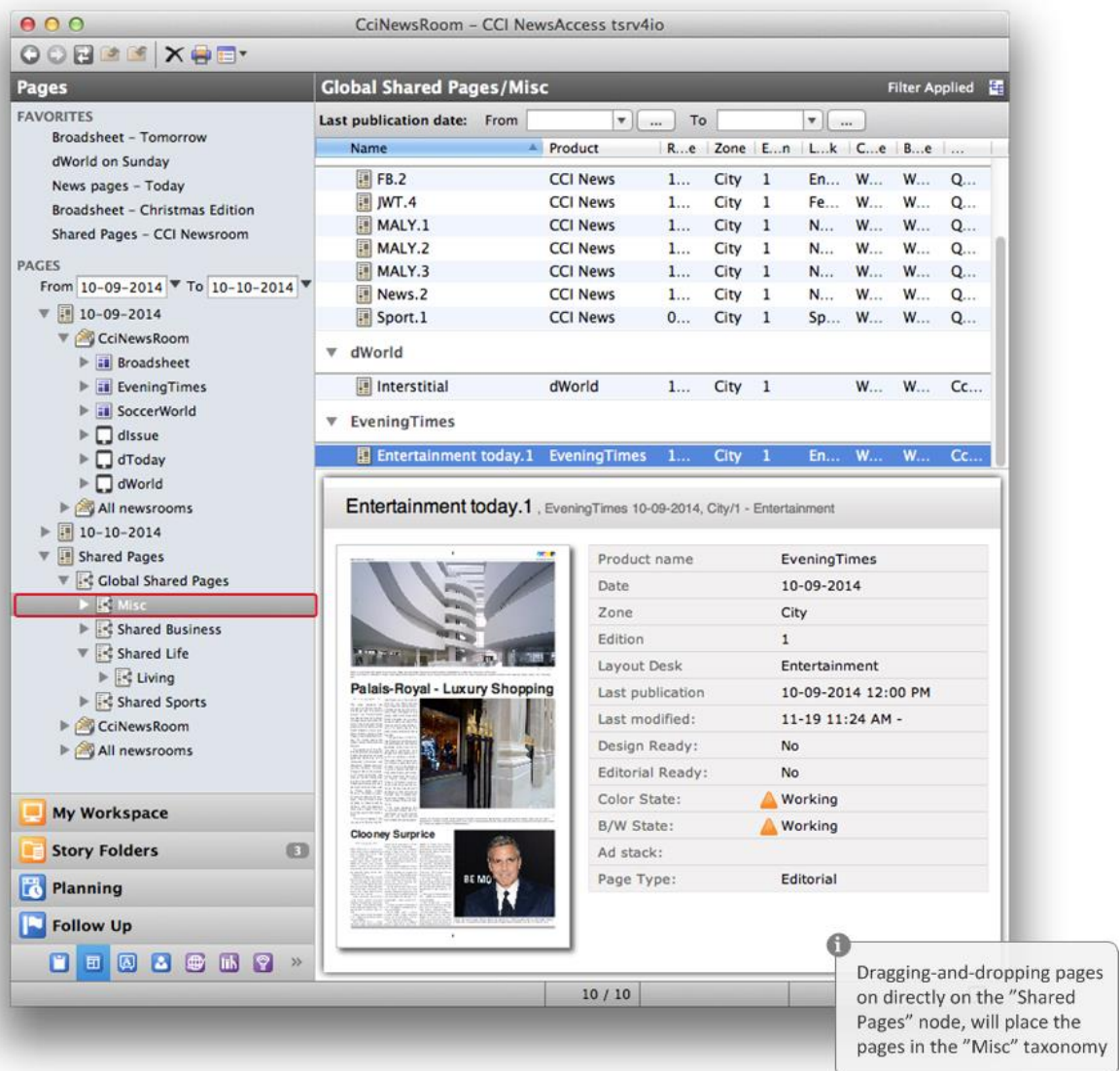


Figure 29. The shared pages in the "Misc" taxonomy.

Important Only production pages can be used as shared pages. Template pages, bank pages, shape library pages and master pages cannot be shared.

How to source shared pages in CCI PageDirector

Shared pages are sourced by dragging-and-dropping a page from the relevant shared pages list to a page in CCI PageDirector **Planning** mode.

A sourced shared page behaves the same way as other editorial source pages in CCI NewsGate. Once a shared page is sourced to a live page, the live page will continue to receive content and layout updates from the original page as long as the content and layout relations are intact.

Note When the operation is carried out, the cursor shows a sourcing arrow.

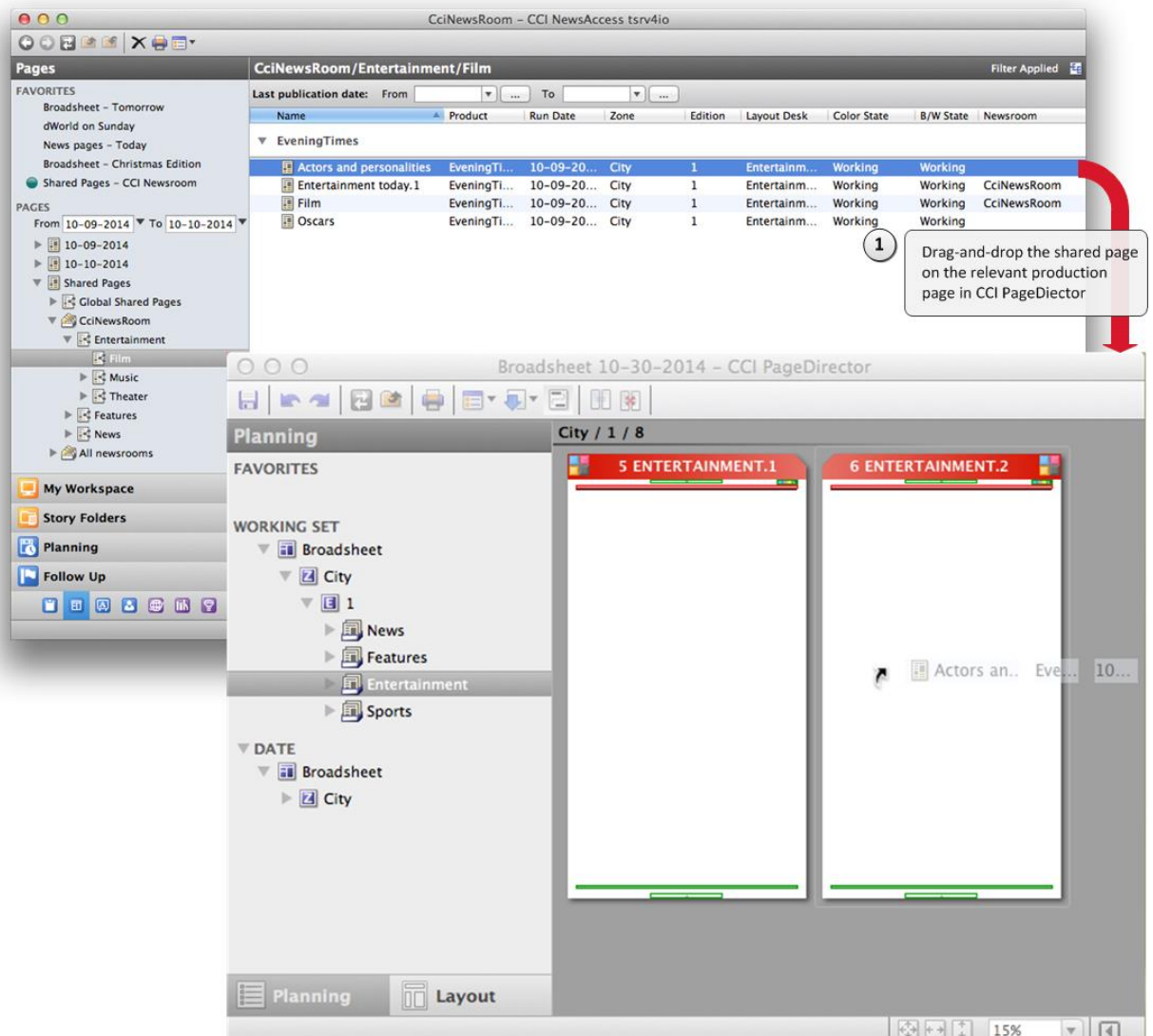


Figure 30. Sourcing a shared page in CCI PageDirector.

When done, the content of the shared page has now been sourced to the live page in CCI PageDirector:

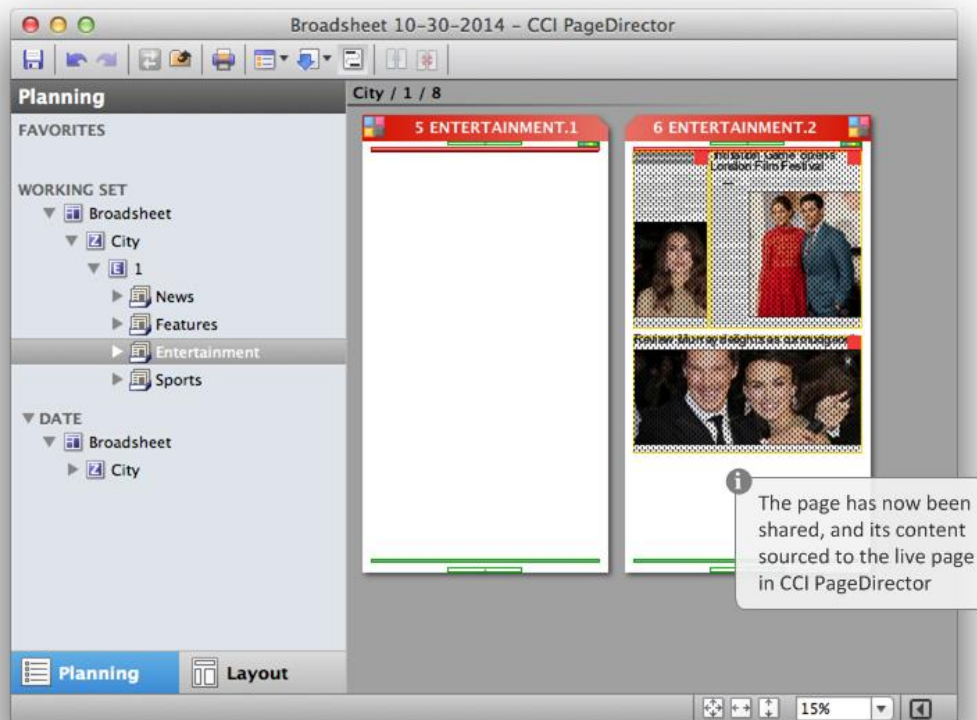


Figure 31. The sourced shared page in CCI PageDirector.

How to source shared pages using Shopper

Shared pages can also be sourced by adding them to Shopper and then dragging-and-dropping the pages from the shopper application to the relevant page in CCI PageDirector.

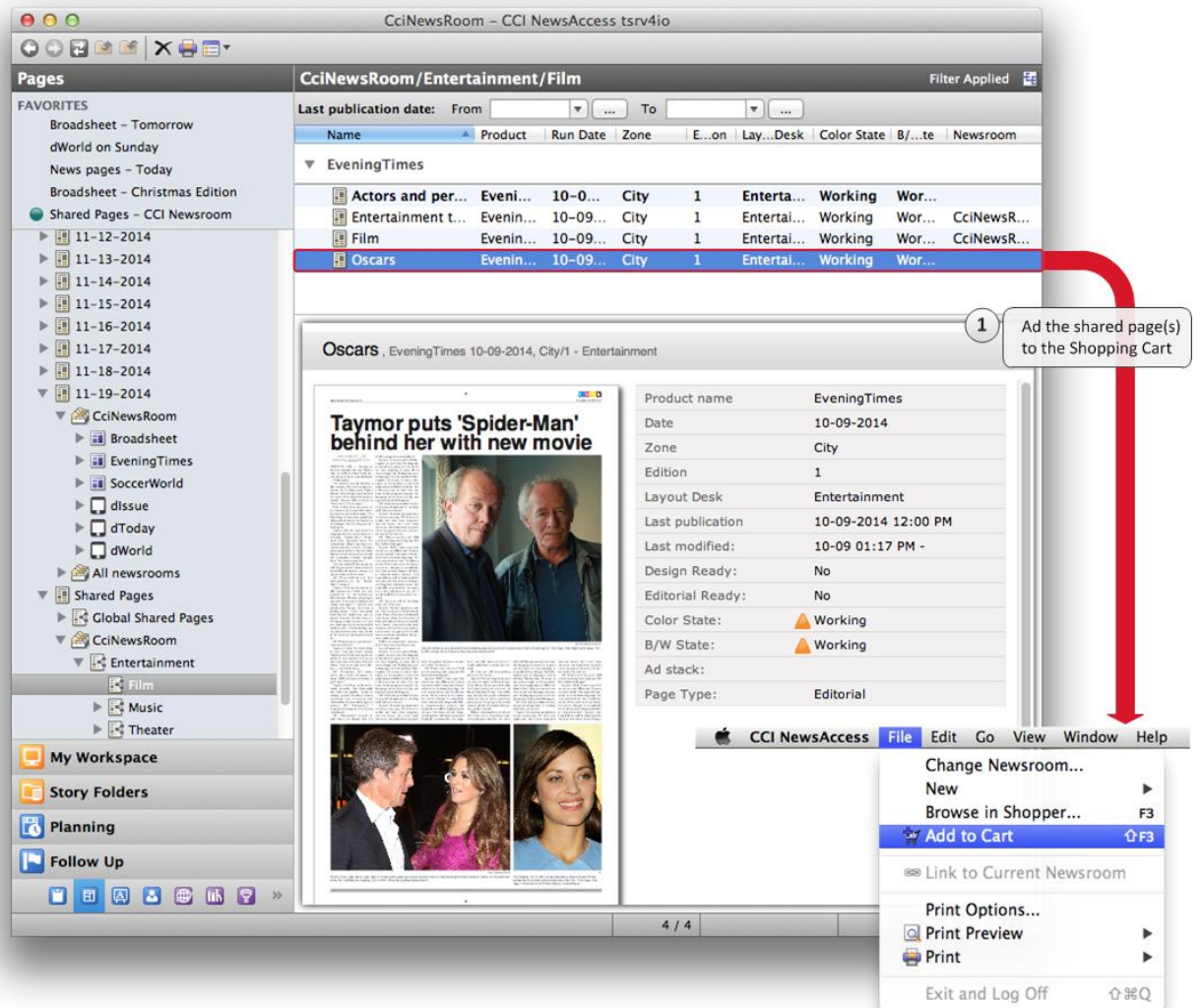


Figure 32. Adding a shared page to Shopper.

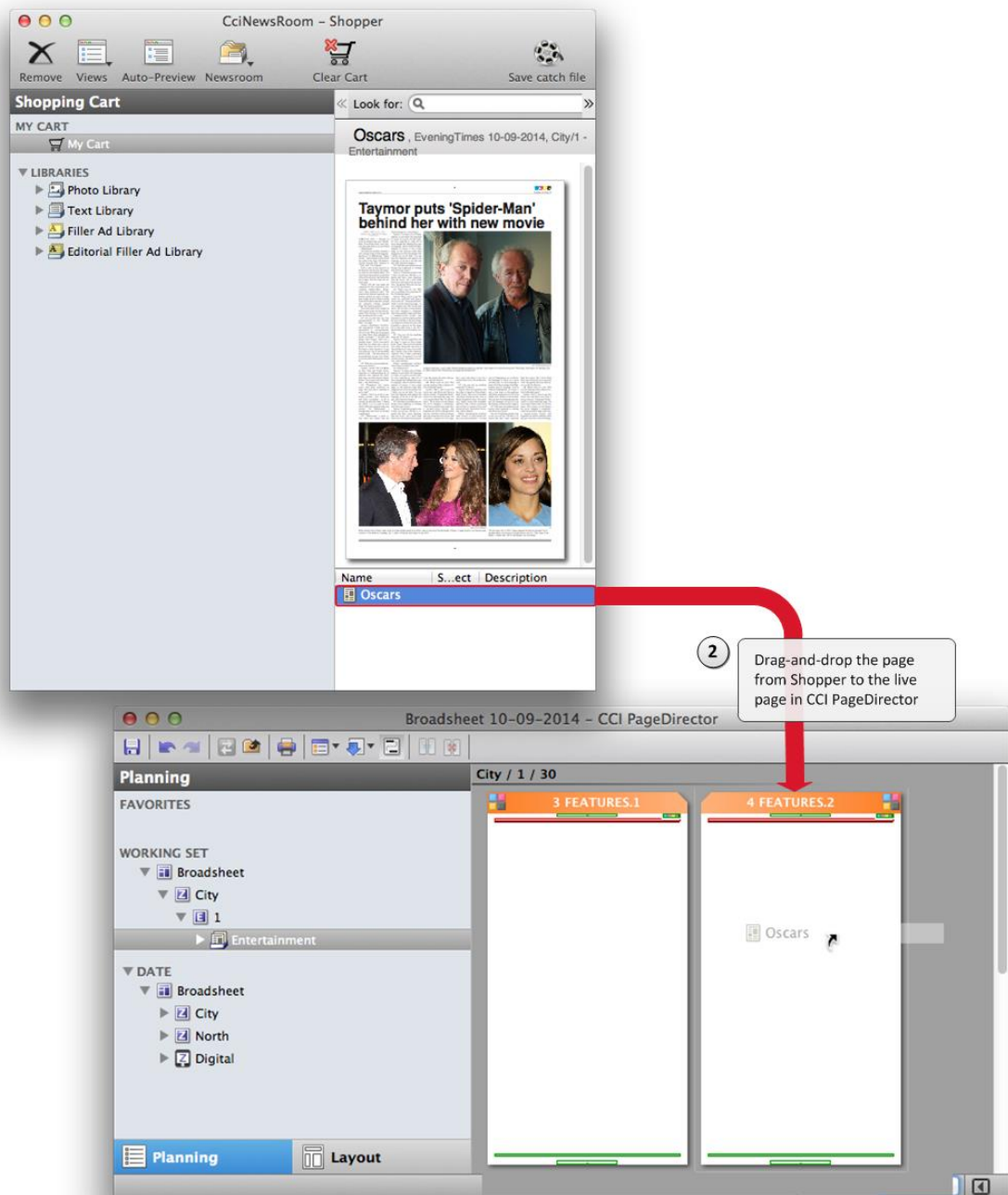


Figure 33. Using a shared page from Shopper in CCI PageDirector.

When done, the content of the shared page has now been sourced to the live page in CCI PageDirector:

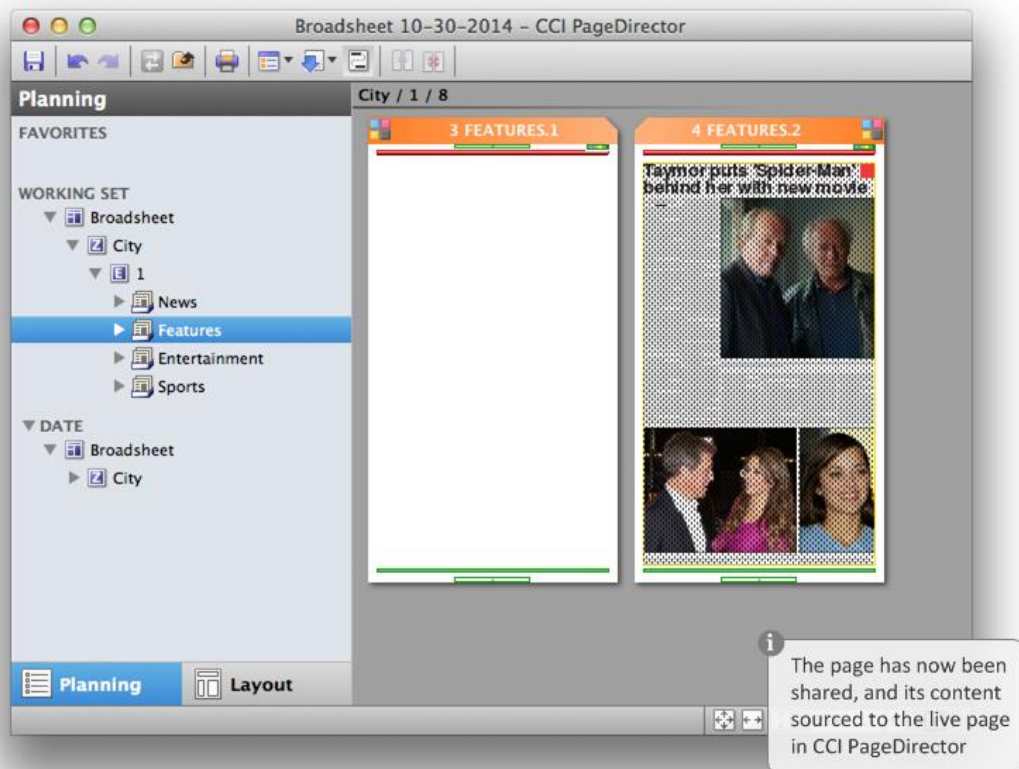


Figure 34. The shared page in CCI PageDirector.

Un-sharing pages

A shared page can be un-shared by removing it from the relevant taxonomy. This is done by displaying the page in the relevant list and then using the "Remove from Shared Pages" context menu option to remove the page from the list.

Note Removing a page from shared pages removes it from the shared pages taxonomy tree only; the original page is unaffected.

Pages that are not manually removed from the shared pages taxonomies will expire according to the expire strategy defined in the **Setup-Print** list.

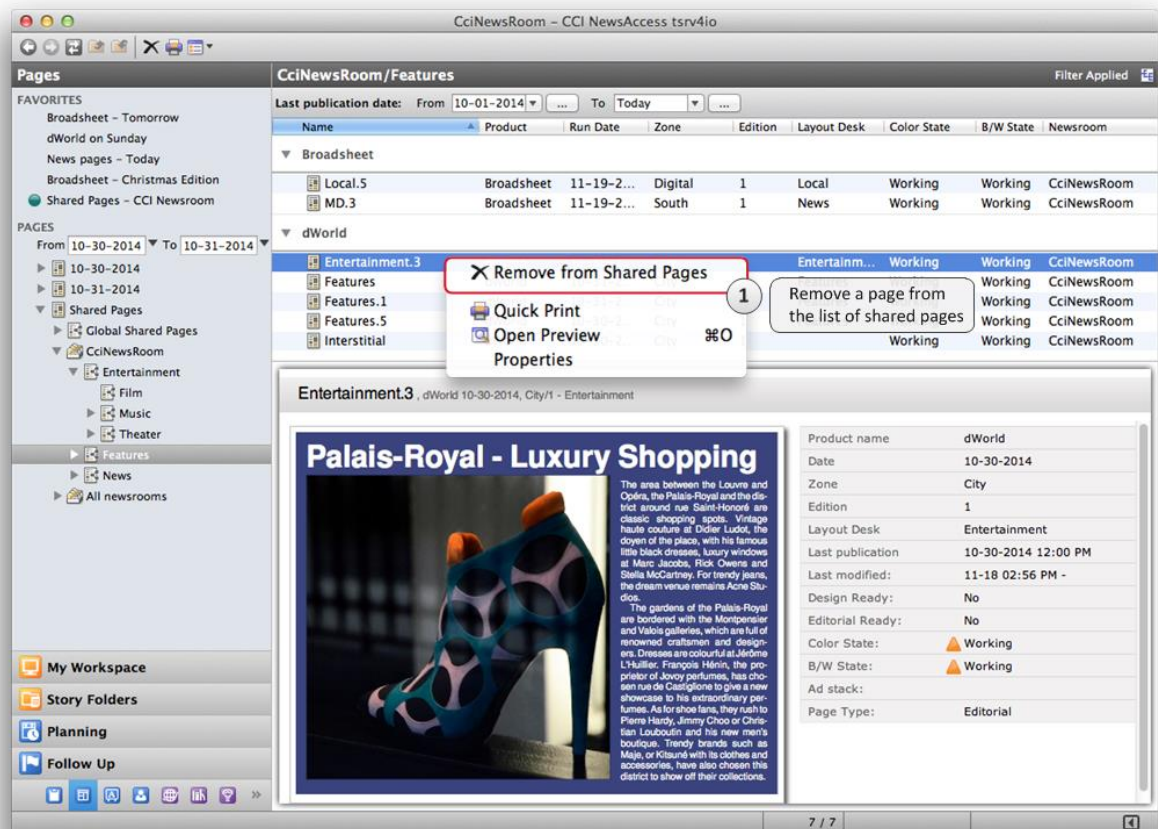


Figure 35. Removing a shared page from a shared pages taxonomy.

CCI Task 88952

Multi Product Package Lists

CCI NewsAccess

In smaller newsrooms, a single person is often in charge of the production of e.g. the sports coverage within multiple products for print, online etc. This means that s/he needs to make sure that packages have been created for a given story for the different products, and also make sure that a story has been completed for all the products in which it runs.

In the **Planning** workspace, package lists and package items list created on basis of the **Packages** task pane can only cover one product, meaning that the user responsible for several products will have to switch between maybe four or five favorites in order to follow the progress of the production.

In order to provide the users responsible for multiple products with more detailed package information, the **Story Folders by Product** task pane in the **Planning** workspace has, from version 3.7.0, been renamed to **Multiple Products** and has been enhanced to offer the possibility of creating package lists and package item lists containing packages from multiple products.